

Packs Piscina Barcelona 2025



Fira de Barcelona

servifira/

Pack Economic S 20m² 2025

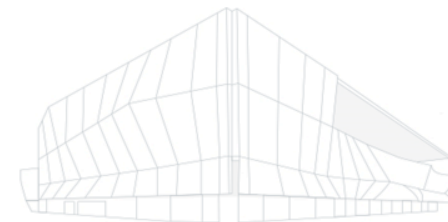
Price	Super Early Bird Price (until February 28th, 2025)	Early Bird price (until October 28th, 2025)	Post Early Bird price (from October 29th, 2025)
Price per sqm	51,30€/sqm	57,00€/sqm	74,10€/sqm

The sales price includes:

- White modular panels
- Anthracite grey carpet
- **Powerbox of 1.2KW** and industry rate
- Lighting at a rate of 9w/m².
- **1 Display exhibitor name** sign in white cut vinyl and 1u. **P&W Logo** per frieze in printed vinyl per frieze.

Furniture and storage can also be hired with an additional cost of 508€
(Early Bird price, from October 29th, 2025, the price will increase to 660,40 €)

- Storage room 1x1m
- 1 table
- 3 chairs
- 1 counter
- 1 stool



Pack Economic M 40m² 2025

Price	Super Early Bird Price (until February 28th, 2025)	Early Bird price (until October 28th, 2025)	Post Early Bird price (from October 29th, 2025)
Price per sqm	37,80€/sqm	42,00€/sqm	54,60€/sqm

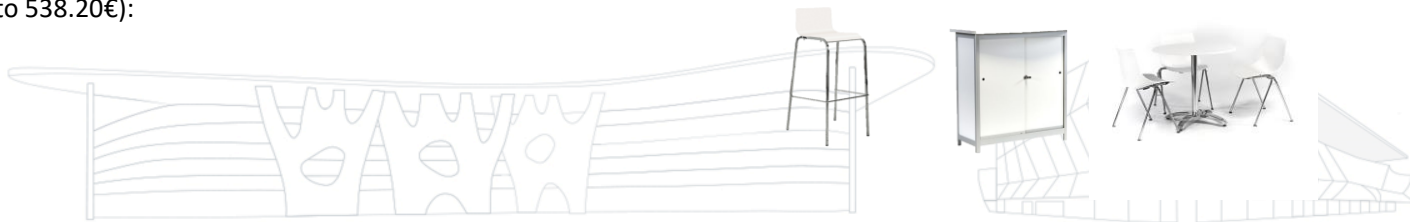
The sales price of the stand includes:

- White modular panels
- Anthracite grey carpet
- **Powerbox of 3,3KW and** Industry rate
- Lighting of 6 units of 30W led track spotlights.
- **Exhibitor's name sign** on frieze in white vinyl cut and another in the tower
- 1 unit printed vinyl of **P&W's logo** for the tower
- 1 unit of printed vinyl of **P&W's logo** for side.
- Storage room 1x1m



Furniture can also be hired at an additional cost of 414 € (Early Bird price, from October 29th, 2025, the price will increase to 538.20€):

- 2 tables
- 6 chairs
- 1 counter
- 1 stool



Pack Aluvision MOD 2. 20-24m² 2025

Price	Super Early Bird Price (until February 28th, 2025)	Early Bird price (until October 28th, 2025)	Post Early Bird price (from October 29th, 2025)
Price sqm /pack	194,40€/sqm	216,00€/sqm	280,80€/sqm

The sale price includes:

- Powebox of 1,2kW
- 1 socket
- 5 LED spotlights 25W
- 1 counter with vinyl logo
- 1 wall covered with printed canvas canvas



Pack Aluvision MOD 3. 24-50m² 2025

Price	Super Early Bird Price (until February 28th, 2025)	Early Bird price (until October 28th, 2025)	Post Early Bird price (from October 29th, 2025)
Price sqm /pack	220,50€/sqm	245,00€/sqm	318,50€/sqm

The sale price includes:

- Powerbox of 1,2kW
- 1 socket
- 8 LED spotlights 25W
- 1 counter with vinyl logo
- Walls covered with printed canvas canvas
- 1 warehouse 2x1

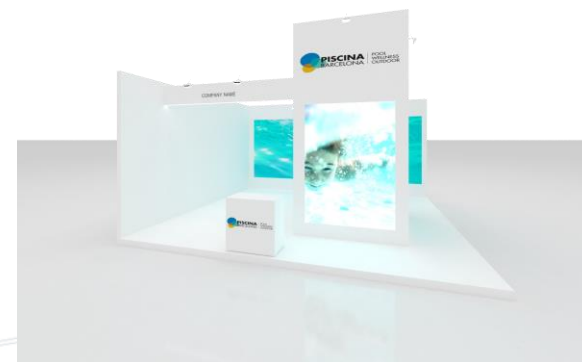


Pack Premium 32-48 m² 2025

Price	Super Early Bird Price (until February 28th, 2025)	Early Bird price (until October 28th, 2025)	Post Early Bird price (from October 29th, 2025)
Price sqm /pack	208,80€/sqm	232,00€/sqm	301,60€/sqm

The sale price includes:

- Platform finished in white melamine
- Graphics
- 1 powerbox of 5kW with 2 sockets
- Lighting
- 1 white carpentry counter with doors and locking system
- 2x2 tower with interior storage



Pack Premium 49-100m² 2025

Price	Super Early Bird Price (until February 28th, 2025)	Early Bird price (until October 28th, 2025)	Post Early Bird price (from October 29th, 2025)
Price sqm /pack	226,80€/sqm	252,00€/sqm	327,60€/sqm

The sale price includes:

- Platform finished in white melamine
- Graphics
- 1 powerbox of 5kW with 2 sockets
- Lighting
- 2 white carpentry counters with doors and closure
- 2x2 tower with interior storage



Stand Ecologic 240 (20-40 sqm) 2025

Precio	Precio Early Bird (hasta 28 octubre 2025)	Precio post Early Bird (a partir del 29 octubre 2025)
Precio m2 /pack	252,00€/m2	328,00€/m2

The sale price includes:

- Carpet tiles 50W x 50L
- Modular structure of 50W x 30D x 240/300H (cm) joined by connectors of the same material (Cardboard Plus)
- Spotlights of 50 w at a rate of 1 spotlight every 3 square
- 3,3kW powerbox with socket
- It allows full and homogeneous printing over the entire surface of one wall besides the graphics on the sides

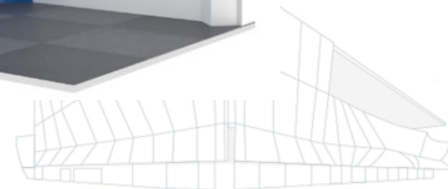


Stand Ecologic 300 (20-40 sqm) 2025

Precio	Precio Early Bird (hasta 28 octubre 2025)	Precio post Early Bird (a partir del 29 octubre 2025)
Precio m2 /pack	252,00€/m2	328,00€/m2

The sale price includes:

- Carpet tiles 50W x 50L
- Modular structure of 50W x 30D x 240/300H (cm) joined by connectors of the same material (Cardboard Plus)
- Spotlights of 50 w at a rate of 1 spotlight every 3 square
- 3,3kW powerbox with socket
- It allows full and homogeneous printing over the entire surface of one wall besides the graphics on the sides





THANK YOU
servifira/